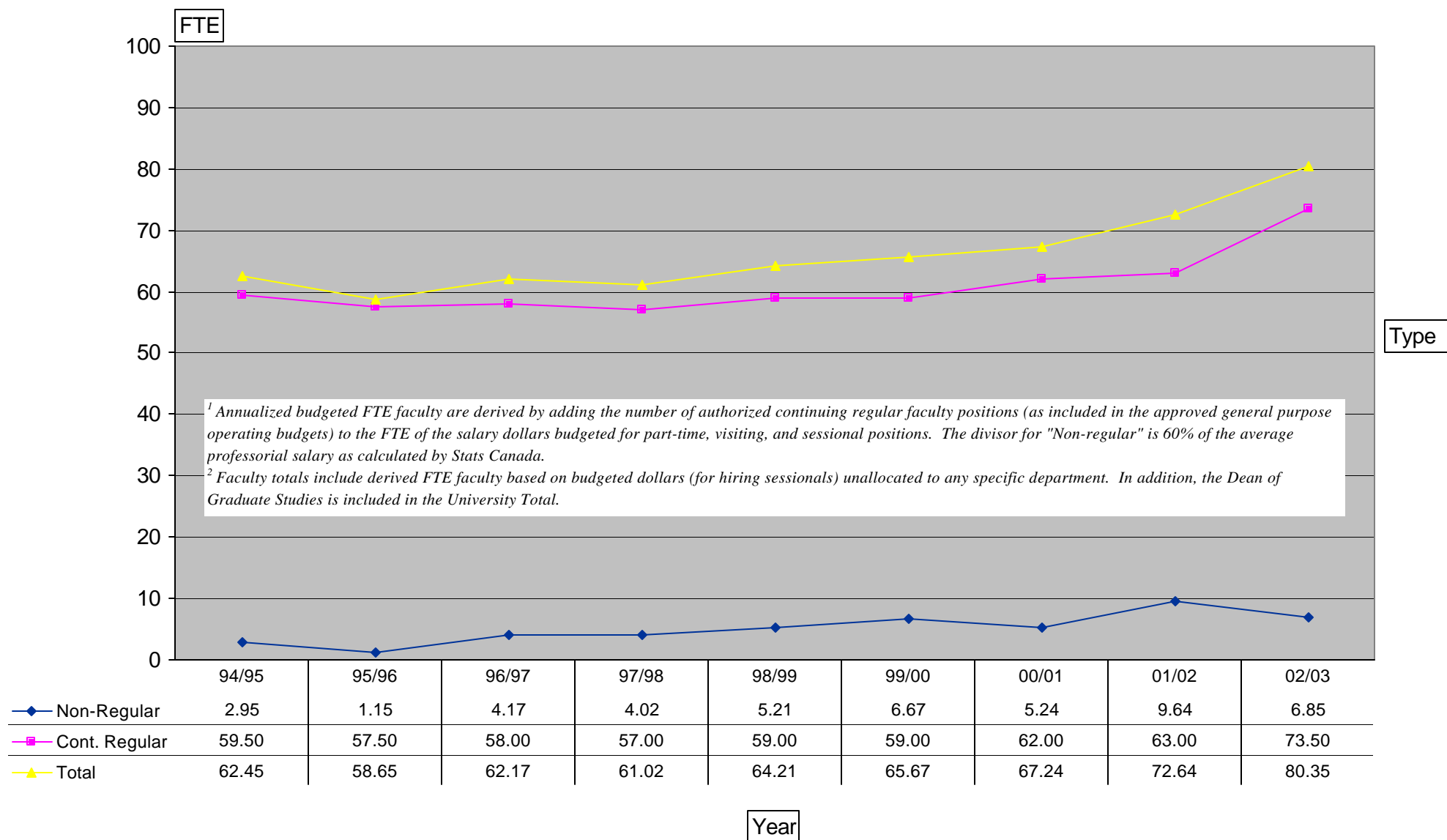


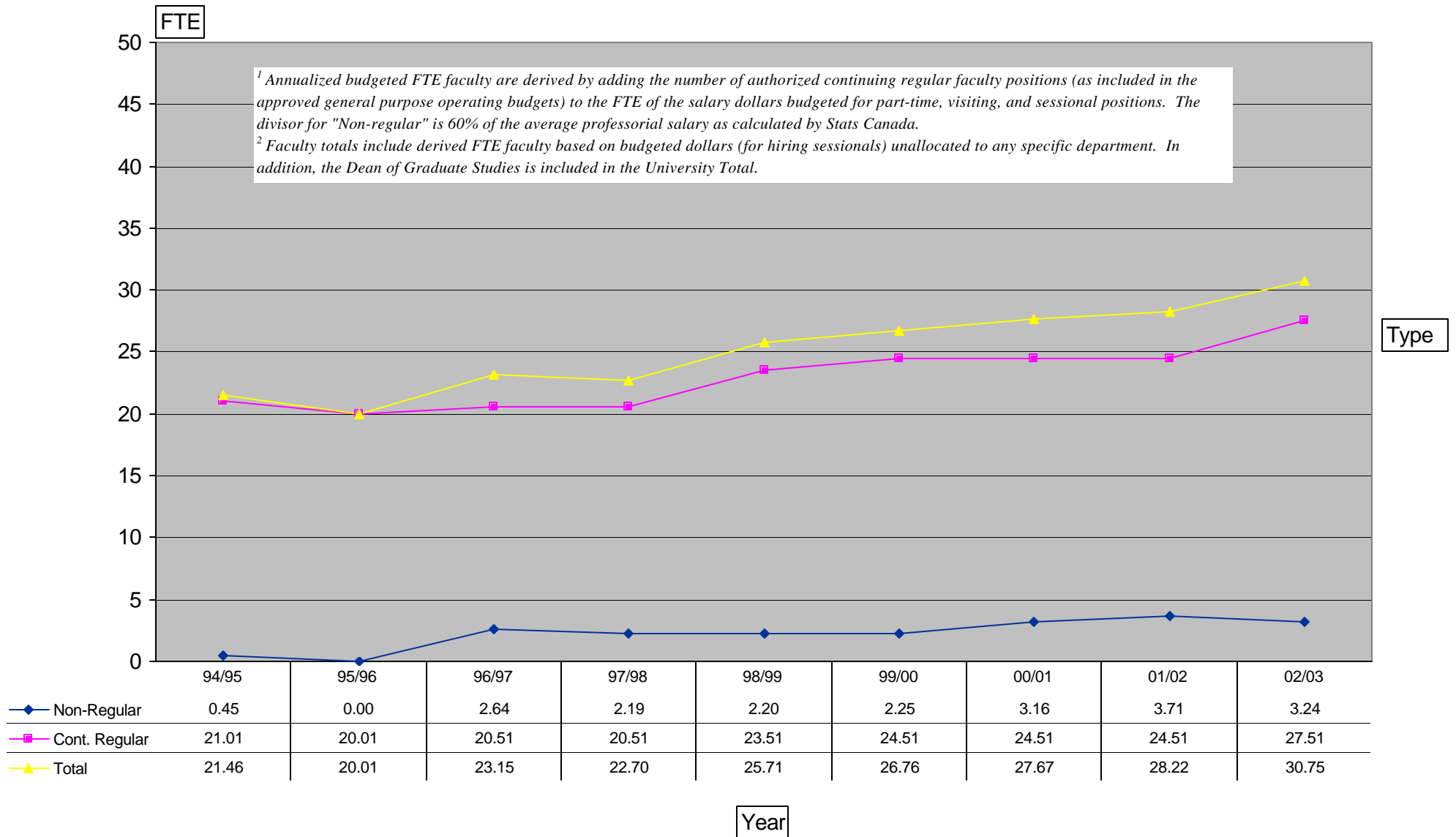
Annualized Budgeted Full-Time Equivalent Faculty^{1,2}



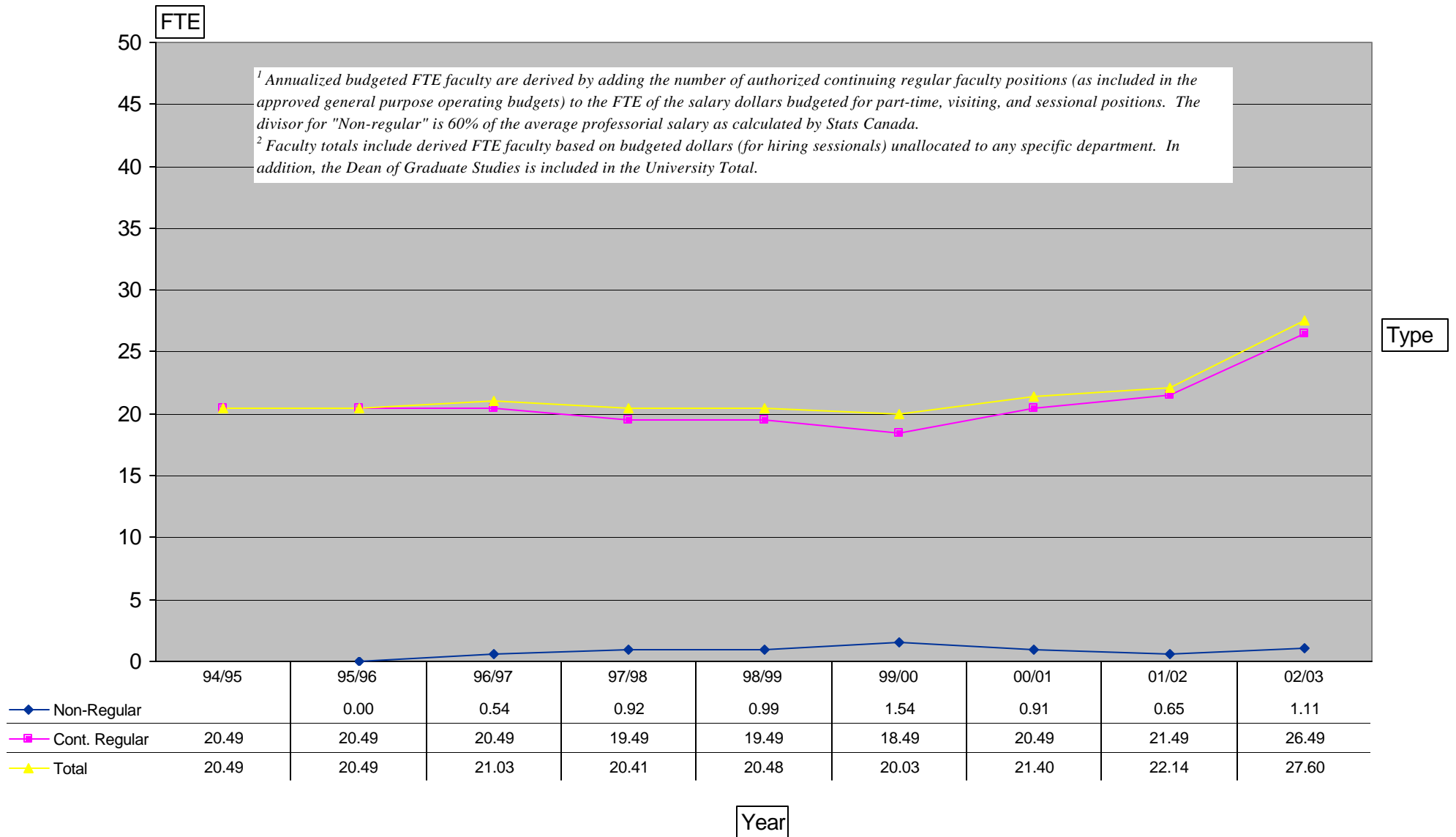
¹ Annualized budgeted FTE faculty are derived by adding the number of authorized continuing regular faculty positions (as included in the approved general purpose operating budgets) to the FTE of the salary dollars budgeted for part-time, visiting, and sessional positions. The divisor for "Non-regular" is 60% of the average professorial salary as calculated by Stats Canada.

² Faculty totals include derived FTE faculty based on budgeted dollars (for hiring sessionals) unallocated to any specific department. In addition, the Dean of Graduate Studies is included in the University Total.

Annualized Budgeted Full-Time Equivalent Faculty^{1,2}



Annualized Budgeted Full-Time Equivalent Faculty^{1,2}



Annualized Budgeted Full-Time Equivalent Faculty^{1,2}

